

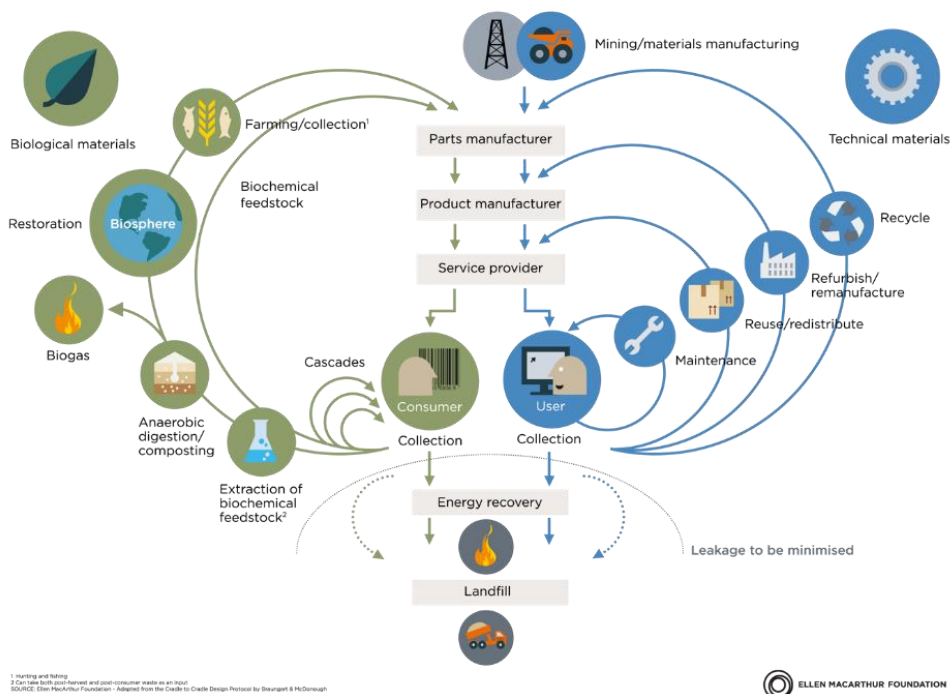
Keysight Technologies

Circular Economy Contributions

What is a Circular Economy?

A circular economy is based on the principles of designing out waste and pollution, keeping products and materials in use, and regenerating natural systems.

The circular economy—an industrial system that is restorative by design



Why a Circular Economy?

The existing linear economy approach of “take-make-waste” must change. Designing out waste and pollution; keeping products and materials in use; and regenerating natural systems are the three principles of a new circular economy system.

SOURCE: Ellen MacArthur Foundation Circular economy system diagram (February 2019) www.ellenmacarthurfoundation.org

Drawing based on Braungart & McDonough *Cradle to Cradle Design (C2C)*

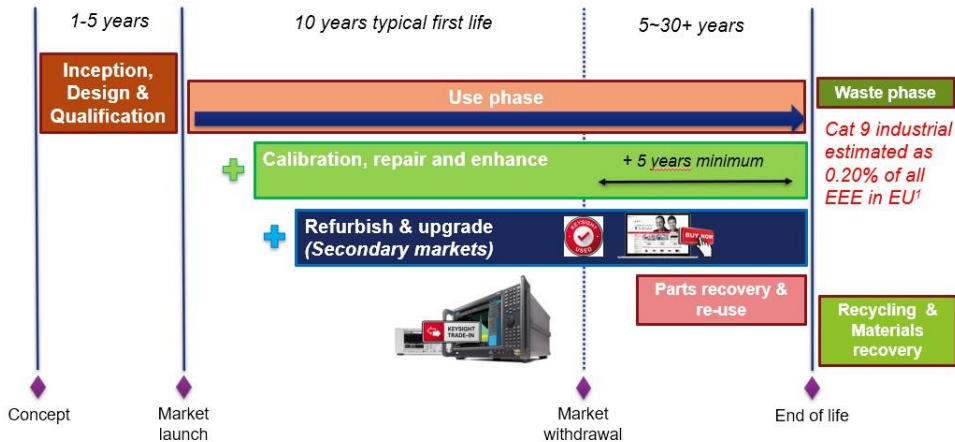
It's not just about waste management

A circular economy favors activities that preserve value in the form of energy, labor and materials. This means designing for long-lasting use, reuse, remanufacturing, and recycling to keep products, components, and materials circulating in the economy.



Keysight's contributions

Keysight's main contribution to a Circular Economy is assuring our solutions are designed and produced to support an extensive use phase, of up to 40 years active service; supported by our calibration, repair and remarketing services:



Lifecycle model for Keysight Solutions

Relating our Business activities into the Circular Economy model;



MAINTAINING

Instruments must provide repeatable and accurate results throughout their lifetime. Periodic calibration services assure the quality of measurements are maintained year after year;



REPAIRING

While products are designed for long term reliability, failures do occur. Repair services help minimize any instrument down-time and customer disruption. Equipment is supported for a minimum of five years after market withdrawal;



REFURBISHING

Technology does not stand still, and enhancements and upgrades are made available to extend the useful life of equipment. When a newer piece of equipment is finally required, substantial trade-in discounts are offered to customers; providing a strong incentive to return equipment to Keysight. We have a dedicated business to refurbish equipment and offer the equipment for sale;



RECYCLING

Equipment only enters the waste stream many decades after being placed on the market. Our contribution to the stream of waste electrical and electronic equipment (WEEE) is insignificant (<0.2% of all EU WEEE¹.) While return to Keysight is made available, most customers responsibly manage end of life equipment through their B2B waste processes.

Additional resources: Keysight [Corporate Social Responsibility \(CSR\) website](#).

¹ Eurostat: [WEEE Data 2017](#) – Monitoring and Control percentage of all EEE placed on the market in 2017 was 1.93%. The Test and Measurement Coalition has estimated the total contribution for the Industrial Monitoring and Control sector to be 0.20%.

Learn more at: www.keysight.com

For more information on Keysight Technologies' products, applications or services, please contact your local Keysight office. The complete list is available at: www.keysight.com/find/contactus

