



E7515W UXM Wireless Connectivity Test Platform

World's most powerful and integrated 5G network emulator,
now supporting Wi-Fi 7

Keysight Offers Complete Development Ecosystems Across the Wireless Industry

Open RAN

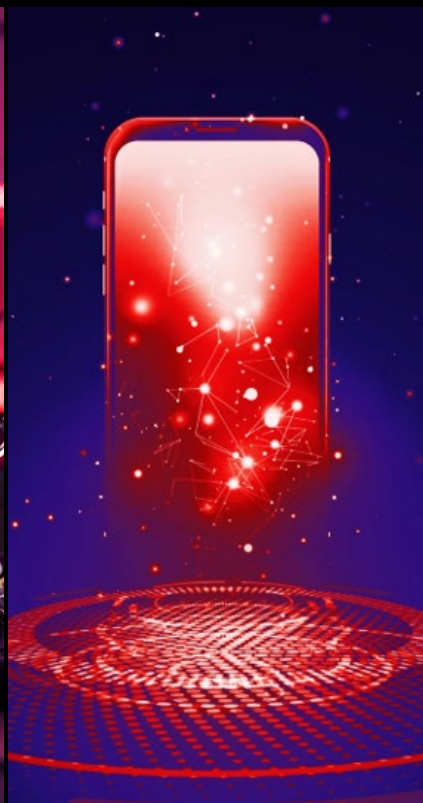
6G Research

Chipsets & Devices

Non-Terrestrial
Communications

Operators, Private
Networks & Test Labs

WLAN



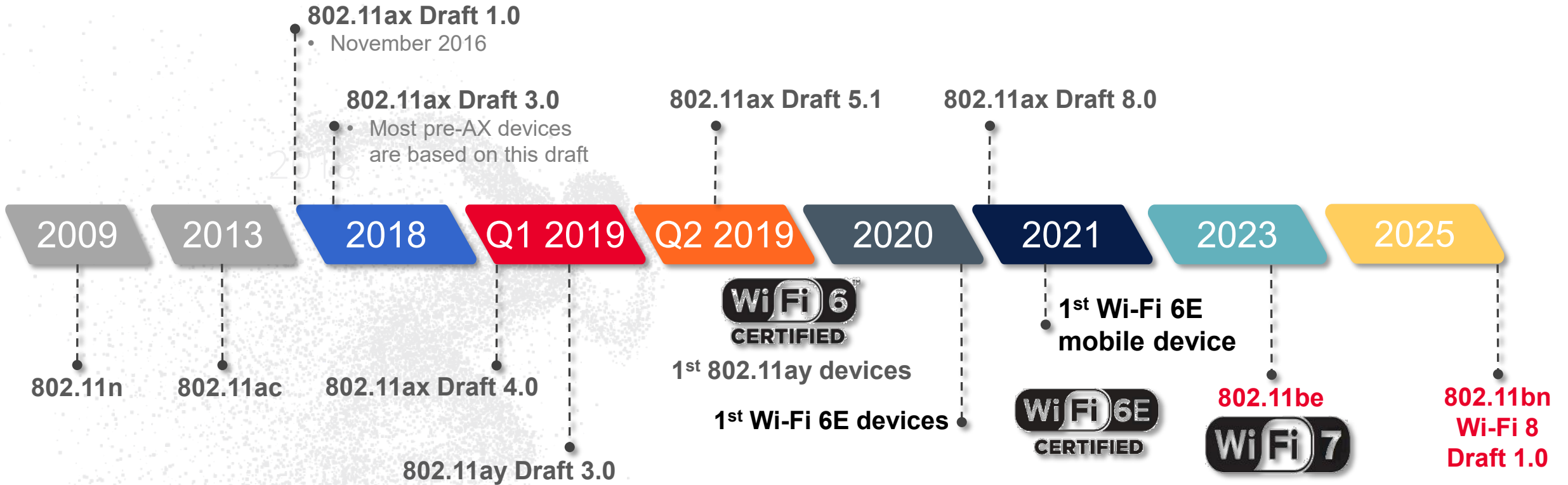
Wi-Fi Industry

- Wi-Fi is the most used wireless communications technology
- It is the primary medium for global internet traffic
- 3.8 billion Wi-Fi devices shipping annually, and 19.5 billion Wi-Fi devices in use



Wi-Fi Technology Evolution

Based on IEEE 802.11



Wi-Fi - Evolving & Emerging Technology



Higher Performance	Advanced Features
46Gbps Throughput 320MHz Bandwidth 4096QAM Modulation Low Latency	16 spatial streams Multi-Link Operation (MLO) Preamble Puncturing Multiple-Resource Units (M-RU)

***More Complexity
Demand for advanced, high-
quality test and troubleshooting
tools***

Introducing the E7515W UXM Wireless Connectivity Test Platform



E7515W UXM Wireless Connectivity Test Platform



Highlights

- The world's most powerful and integrated 5G network emulator, **now supporting Wi-Fi 7**
- Supports both Wi-Fi Station & AP Test
- Comprehensive RF measurements and analysis
 - Includes client hotspot testing
- Station Cellular & Wi-Fi interoperability in one box
- Supports Wi-Fi 7 & previous technology generations

Comprehensive RF Test and Analysis

- Full Wi-Fi 7 capability with 4x4 320MHz 4kQAM
- RF Measurements
 - Tx test: Power, Spectrum mask and EVM
 - Rx test: Rx Sensitivity, PER statistics in real time
 - Maximum Throughput Performance
 - IEEE Specification Pass/Fail automated assessment
- RU Sweep to assess all OFDMA combinations
- Extensive Rx Sensitivity testing and unique Rate vs Range evaluation
- Wi-Fi / Cellular co-existence testing
- Intuitive GUI: Single screen for physical configuration, Rx statistics and Tx measurements



Wi-Fi 6E NSS2 MCS11 results shown

Fixed Wireless Access Test

One Box – E7515W UXM Wi-Fi

- Fixed Wireless Access growing quickly world-wide
- In 2022, 90% of US net broadband customer additions were on FWA
- The UXM Wi-Fi provides a one-box solution for FWA testing
- Only one-box solution in the market
- Operating both Wi-Fi & Cellular connectivity at the same time
- Test Wi-Fi scenarios with different backhaul configurations & bandwidths
- With all the key Wi-Fi system test operation
- The UXM W supports Wi-Fi 7 and previous technologies

Performance Requirements
Maximum client capacity
Latency/Jitter
Packet Loss
Rate vs. Range
UDP Throughput
TCP Goodput
Mixed Clients
Triple Play QoS
WMM Power Save
Unicast Video Sessions
Quality of Experience
Receiver Sensitivity



